

DIMENSIONAL INFORMATION

	EXISTING 8	EXISTING 26
RUNWAY LENGTH	6,002'	6,002'
RUNWAY WIDTH	100'	100'
RUNWAY SHOULDER WIDTH	0'	0'
TAXIWAY WIDTH	VARIABLES	VARIABLES
TAXIWAY EDGE SAFETY MARGIN	7.5'	7.5'
TAXIWAY SHOULDER WIDTH	0'	0'
TAXIWAY SAFETY AREA WIDTH	79'	79'
TAXIWAY OBJECT FREE AREA WIDTH	131'	131'
RUNWAY CENTERLINE TO TAXIWAY HOLD LINE	250'	250'
RUNWAY CENTERLINE TO TAXIWAY CENTERLINE LENGTH	400'	400'
RUNWAY CENTERLINE TO BUILDING RESTRICTION LINE LENGTH	745'	745'

BUILDING DATA TABLE

STRUCTURE	DESCRIPTION	HEIGHT - AGL	TOP ELEVATION - MSL
A	TUNNEL CONTROL	15.5'	698'
B	TERMINAL / FBO - VACANT	10'	704'
C	CORPORATE HANGAR	24.5'	709'
D	FBO MAINTENANCE HANGAR	29'	706'
E	TENANT COMMUNITY HANGAR	23'	702'
F	TENANT OFFICE BUILDING	16'	694'
G	TENANT COMMUNITY HANGAR	40.5'	718'
H	ELECTRICAL VAULT	10'	686'
I	BOX HANGAR	30'	706'
J	T-HANGARS (8 UNIT)	18.5'	693'
K	T-HANGARS (8 UNIT)	18.5'	692'
L	T-HANGARS (8 UNIT)	18.5'	692'
M	TERMINAL / FBO	25'	676'

NOTE:
AGL = ABOVE GROUND LEVEL / MSL = MEAN SEA LEVEL

RUNWAY SAFETY AREA

	EXISTING 8	EXISTING 26
RUNWAY PROTECTION ZONE (RPZ)	1,000' x 1,510' x 1,700'	1,000' x 1,750' x 2,500'
FAR PART-77 APPROACH SURFACE	1,000' x 3,500' x 10,000'	1,000' x 16,000' x 50,000'
RUNWAY SAFETY AREA (RSA)	1,000' x 500'	1,000' x 500'
OBJECT FREE AREA (OFA)	1,000' x 800'	1,000' x 800'
OBSTACLE FREE ZONE (OFZ)	200' x 400'	200' x 400'
PRECISION OBSTACLE FREE ZONE* (POFZ)	200' x 800'	200' x 800'

NOTE:
1. THE PRECISION OBSTACLE FREE ZONE IS IN EFFECT ONLY WHEN ALL OF THE FOLLOWING OPERATIONAL CONDITIONS ARE MET:
A. VERTICAL GUIDED APPROACH
B. REPORTED CEILING BELOW 250 FEET AND/OR VISIBILITY LESS THAN 3/4 STATUTE MILE (OR RVR BELOW 4,000 FEET)
C. AN AIRCRAFT ON FINAL APPROACH WITHIN TWO MILES OF THE RUNWAY THRESHOLD.

2. THE EXISTING RWY 8 APPROACH SURFACE INNER WIDTH DIMENSION CORRESPONDS TO THE WIDTH OF THE PRIMARY SURFACE WHICH IS REGULATED BY THE RWY 26 APPROACH SURFACE FUTURE RUNWAY END ELEVATIONS ESTIMATED UNTIL TIME OF CONSTRUCTION.

RUNWAY DATA

	EXISTING 8	EXISTING 26
LATITUDE (LAT.)	42° 44' 28.73" N	42° 44' 39.31" N
LONGITUDE (LONG.)	86° 07' 07.75" W	86° 05' 48.61" W
ELEVATION (EL.)	698'	686'
STATION (STA.)	62+02	02+00
BEARING	N 79° 42' 18.36" E	N 79° 42' 18.36" E
APPROACH TYPE	NON-PRECISION	PRECISION
TOUCHDOWN ZONE LATITUDE (LAT.)	42° 44' 28.73" N	42° 44' 39.31" N
TOUCHDOWN ZONE LONGITUDE (LONG.)	86° 07' 07.75" W	86° 05' 48.61" W
TOUCHDOWN ZONE ELEVATION (EL.)	698'	686'

APRON DATA

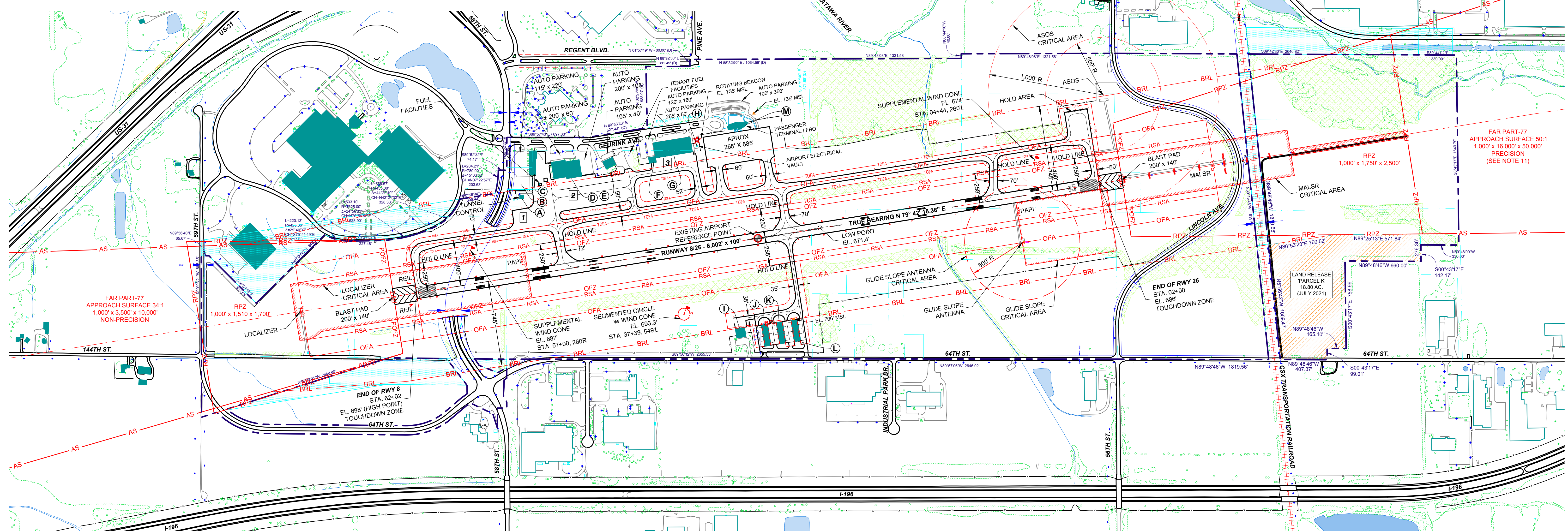
	EXISTING 1	EXISTING 2	EXISTING 3
DESCRIPTION	HOLD APRON	HANGAR APRON	HANGAR APRON
SIZE	260' x 270'	876' x 278'	350' x 148'

LEGEND

EXISTING	ITEM
[Symbol]	BUILDINGS
[Symbol]	TREES AND TREE LINES
[Symbol]	FENCE LINES
[Symbol]	ROADS
[Symbol]	RAILROAD
[Symbol]	WETLANDS
[Symbol]	RIVERS, LAKES, COUNTY DRAINS
[Symbol]	GROUND CONTOURS
[Symbol]	WIND CONE
[Symbol]	ROTATING BEACON
[Symbol]	RUNWAY / TAXIWAY LIGHTING
[Symbol]	POWER POLE
[Symbol]	ANTENNA TOWER
[Symbol]	AIRPORT PROPERTY LINE
[Symbol]	PROPERTY PARCELS
[Symbol]	SECTION LINES
[Symbol]	AVIGATION EASEMENT
[Symbol]	LAND RELEASE
[Symbol]	RUNWAYS, TAXIWAYS, PARKING
[Symbol]	RUNWAY MARKINGS
[Symbol]	CENTERLINES
[Symbol]	RUNWAY PROTECTION ZONE
[Symbol]	RUNWAY SAFETY AREA
[Symbol]	OBJECT FREE AREA
[Symbol]	OBSTACLE FREE ZONE
[Symbol]	BUILDING RESTRICTION LINE
[Symbol]	APPROACH SURFACE
[Symbol]	TAXIWAY OBJECT FREE AREA

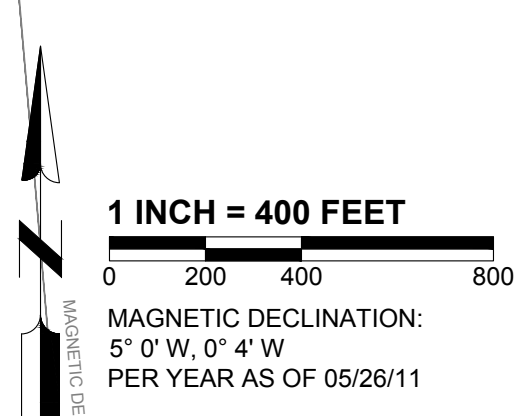
GENERAL NOTES:

- AIRPORT PROPERTY IS LOCATED WITHIN SECTIONS 7, 8, 9, 16, 17, and 18 OF FILLMORE TOWNSHIP, ALLEGAN COUNTY, MICHIGAN (T4N-R15W) WITHIN THE CITY OF HOLLAND POLITICAL JURISDICTION.
- AERIAL PHOTOGRAPHY AND BASE INFORMATION PROVIDED BY WOOLPERT, LLP. DATE OF PHOTOGRAPHY: 5/5/09.
- AIRPORT PROPERTY LINE SURVEY PROVIDED BY NEDERVELD, INC. DATE OF SURVEY: 5/27/09.
- THE NORTH MAGNETIC DECLINATION WAS CALCULATED USING INFORMATION FOUND ON WWW.NOAA.GOV/SEG/GEOMAG/DECLINATION. THESE CALCULATED FIGURES ARE BASED ON THE INTERNATIONAL GEOMAGNETIC REFERENCE FIELD MODEL, VERSION 10 (2005-2010). DECLINATION AND VARIANCE CALCULATED: 05/26/11.
- THE AIRPORT IS CLASSIFIED AS AN AIRPLANE DESIGN GROUP II; HOWEVER, SEVERAL TAXIWAYS ARE CONSTRUCTED USING AIRPLANE DESIGN GROUP III STANDARDS.
- CONTACT "MISS DIG" PRIOR TO ANY CONSTRUCTION TO DETERMINE THE LOCATION OF BELOW GROUND UTILITIES.
- MORE DETAILED EXISTING BUILDING INFORMATION IS SHOWN ON BUILDING AREA PLAN, PAGE 6.
- HEIGHT OF PERIMETER FENCE VARIES AND SHOULD BE CONFIRMED WITH AIRPORT SPONSOR REGARDING HEIGHTS AT SPECIFIC LOCATIONS.
- THE SYMBOLS SHOWN ARE SMALL DUE TO SCALE; HOWEVER, THEY ARE LEGIBLE IN THE ELECTRONIC FILE.
- THE EXISTING RWY 8 APPROACH SURFACE INNER WIDTH DIMENSION CORRESPONDS TO THE WIDTH OF THE PRIMARY SURFACE WHICH IS REGULATED BY THE RWY 26 APPROACH SURFACE DIMENSIONS.
- THE RUNWAY 26 APPROACH SURFACE SLOPE IS 50:1 FOR THE FIRST 10,000 FT. AND THEN 40:1 FOR THE FINAL 40,000 FT.



AIRPORT REFERENCE POINT

	EXISTING
LATITUDE (LAT.)	42° 44' 34.02"
LONGITUDE (LONG.)	86° 06' 28.18"
ELEVATION (EL.)	698'
STATION (STA.)	32+01
OFFSET FROM RUNWAY 8/26	0'



REVISIONS

NO.	DATE	REMARKS	BY	CHK
1	10/29/15	ADDED PARCEL 37, UPDATED RWY 8 RPZ	AEF	AEF
2	2/22/17	FM 03-07-C28	GAM	AEF
3	10/10/18	EAST APRON TAXIWAY CONNECTOR	AEF	JET
4	1/22	ADDED LAND RELEASE 'PARCEL K'	AEF	AEF
5				
6				
7				
8				
9				
10				

WEST MICHIGAN REGIONAL AIRPORT
HOLLAND, MI

AIRPORT LAYOUT PLAN
EXISTING AIRPORT LAYOUT PLAN

STATE ID. NO. 03-07

MSH PROJECT NO. 08199-00-09001
DESIGNED: SADW 5/11

FEDERAL CONTRACT NO. 08-18
DRAWN: AEF 5/11

STATE CONTRACT NO. B-28-0045-3006
CHECKED: SADW 5/11

2895 PORT LANSING ROAD
LANSING, MICHIGAN 48908
517.321.8334 • 517.321.5932 FAX

Mead & Hunt

These documents shall not be used for any purpose or project for which it is not intended. Mead & Hunt shall be indemnified by the client and held harmless from all claims, damages, liabilities, losses, and expenses, including attorney's fees and costs, arising out of such reuse or reuse of the documents, in addition to unauthorized reproduction of these documents, in part or as a whole, is prohibited.

3 OF 14

January 26, 2022 03:07 Title City Airport ALP.dwg

IF PAPER SIZE IS 24"x36" USE SCALE SHOWN. ALL OTHER PAPER SIZES ARE NOT TO SCALE.